

# **Draft Disability Inclusion Action Plan Survey**

**City of Stonnington**



**Easy English**

## Hard words



This book has some hard words.

The first time we write a hard word

- the word is in **blue**
- we write what the hard word means.

## You can get help with this book



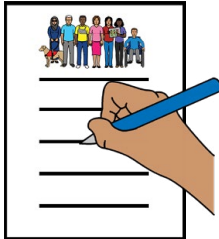
You can get someone to help you

- read this book
- know what this book is about



- find more information.

We will write contact information at the end of this book.



## About this book

This book is from the City of Stonnington.

This book is a **survey**.

A survey means

- we ask you questions
- you tell us your answers or ideas.

This book is about our Disability Inclusion Action Plan.



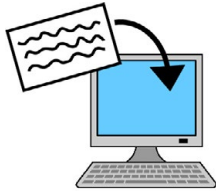
The Disability Inclusion Action Plan says how we will support people with disability.



You can use this book to tell us what you think of our work.



You can ask someone to help you fill in this book.



When you have filled in this book you can email Miranda.

[access@stonnington.vic.gov.au](mailto:access@stonnington.vic.gov.au)



You can also post your answers to Miranda.

Miranda Cross  
311 Glenferrie Road  
Malvern 3144 VIC



You can also call Miranda to tell us what you think.

0436 337 081



## Questions about you

### 1. Who are you?

Tick **1** box.

I am a person with disability

I am a carer for a person with disability

I work with people with disability

I am a community member who cares  
about **inclusion**

Inclusion means everyone

- can be part of something
- feels important.





## 2. How old are you?

Tick **1** box.

Under 18

18 to 24

25 to 34

35 to 44

45 to 54

55 to 64

65 to 74

75 or older

### 3. What is your gender?

Tick **1 or more** boxes.

Woman

Man

Nonbinary

I do **not** want to say.



#### 4. Are you Aboriginal or Torres Strait Islander?

Tick **1** box.

Aboriginal

Torres Strait Islander

Aboriginal and Torres Strait Islander

I am **not** Aboriginal or Torres Strait Islander

I do **not** want to say.





**5. Do you speak a language that is not English?**

Tick **1** box.

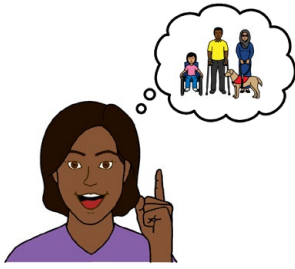
Yes

No

I do **not** want to say.

If you speak a language that is **not** English,  
what other language do you speak?

## Questions about our work



**6. How can we help the community understand disability?**



**7. How can we change the way the community thinks about disability?**



## 8. How can we make our buildings more **accessible**?

Accessible means easy for everyone to



- go to



- use.



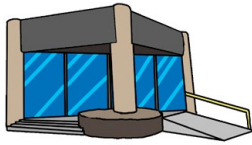
## **9. How can we make our events more accessible?**

For example, Carols by Candlelight.



## **10. How can we make our programs more accessible?**

For example, computer lessons at the library.



**11. How can we make sure our offices are accessible?**



**12. How can we support people with disability to get jobs?**

### 13. How can we help people contact us in accessible ways?



For example, at our

- website
- customer service centre.



### 14. Is there anything else you want to tell us?

## More information



For more information contact the  
City of Stonnington.



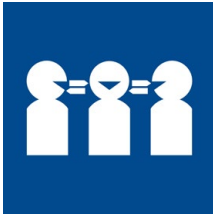
Call            Miranda  
                  0436 337 081



Website    [stonnington.vic.gov.au/Home](http://stonnington.vic.gov.au/Home)



Email            [access@stonnington.vic.gov.au](mailto:access@stonnington.vic.gov.au)



### **If you do not speak English**

Use the free Translating and Interpreting Service or TIS.



Call            131 450

Give the TIS officer the phone number you want to call.



### **If you need help to speak or listen**

The National Relay Service can help you make a phone call.



Call            1800 555 660



Website    [bit.ly/nrs-helpdesk](http://bit.ly/nrs-helpdesk)

Give the relay officer the phone number you want to call.



## Notes

[illegible]

## Notes

[illegible]

[illegible]

This Easy English document was created by Scope (Aust) Ltd. in May 2023 using Picture Communication Symbols (PCS). PCS is a trademark of Tobii Dynavox, LLC. All rights reserved. Used with permission. This document must not be sold to third parties. The images must not be reused without permission. For more information about the images, contact Scope on 1300 472 673 or visit [scopeaust.org.au](https://scopeaust.org.au)

